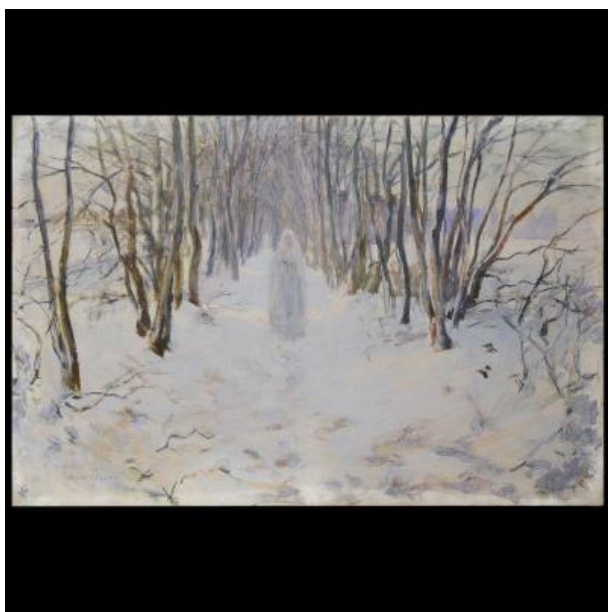




Numa Gillet (1868-1940) - Communiant In The Snow



3 200 EUR

Signature : Numa GILLET (Bordeaux, 1868 - 1940)

Period : 20th century

Condition : Parfait état

Material : Oil painting

Length : 92 cm hors cadre

Width : 140 cm hors cadre

<https://www.proantic.com/en/562440-numa-gillet-1868-1940-communiant-in-the-snow.html>

Description

Numa GILLET

(Bordeaux, 1868 - 1940)

Communiant in the snow

Oil on canvas, H. 92 cm; W. 140 cm

Signed lower left

Numa François Gillet was born in Bordeaux under Napoleon III, in this France with a changing face. First painter and ceramist in the studio of Georges Delvaux, this cultivated man is passionate about history, and in particular archeology. For him, the town of Montigny-sur-Loing will be an open-air theater, working with his brushes as well as with plans to create several villas for which he will be the architect. Lyricism, mythology and history will link him to Armand Point, famous symbolist

Dealer

Galerie de Frise

Specialist in ancient paintings

Mobile : 06 77 36 95 10

Saint-Julien-de-Crempse 24140

painter, with whom Numa Gillet will find a lot of inspiration.

Our white canvas, where this young girl merges with the snow and the slender trees, could be compared to the spiritual journey of a communicant going to church. This refined canvas goes towards the symbolism so often worked by the artist, where the subject becomes only secondary.