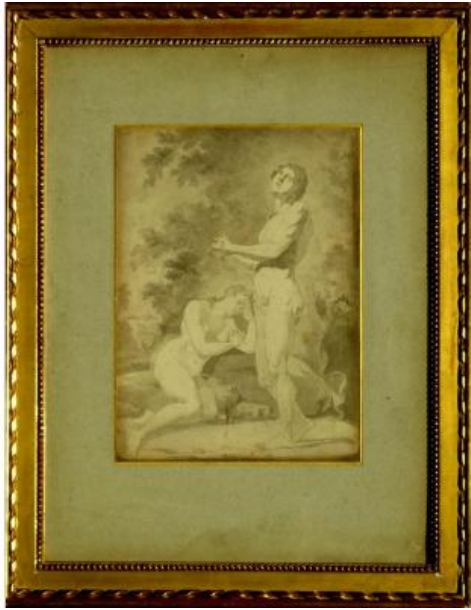




Great Drawing End XVIII : "adam And Eve And The Serpent"



850 EUR

Period : 18th century

Condition : En l'état

Material : Paper

<https://www.proantic.com/en/450966-great-drawing-end-xviii-quotadam-and-eve-and-the-serpentquot.html>

Description

I finally found him the frame he deserved !
This beautiful neoclassical design dates from the late eighteenth or early nineteenth. The powerful technique of the feather line that carves the contours while the shades and shades are treated with more or less diluted Indian ink wash certainly indicates the work of an illustrator who provided this drawing for to be engraved, probably for a Bible. It illustrates the moment when Adam and Eve become aware of the sin committed by eating the fruit of the Tree of Knowledge.

Adam stands wringing his hands, looking up at the sky in despair as Eve, collapsed, holds her head and the snake who instigates the fault stands at the bottom right ...

It's a sheet of laid paper 30.9 X 22.5 at the sight,

Dealer

Galerie Diane et Eric Lhoste

Antiquaire Généraliste Spécialisé en tableaux

Mobile : 00 33 (0)6 07 83 38 91

32 rue Emile Garet

Pau 64 000

stretched by the edges by a marie-louise with golden net on a cardboard 48 X 37 cm with label of framer (certainly posterior).

Condition: two wormholes, a darker right side band (glue?), Rust bites down the middle, style frame 55 X 43 cm, later, but with superb gilding.

Do not hesitate to ask us by email or phone for additional information or photos.

We have many objects and paintings to restore in our shop of Pau for which we prefer the sale on the spot, preferably in lots!

Other photos and many other objects in our shops in Pau and Biarritz and on our website:

galerielhoste.com.